



Gilman Precision | Spindle Repair Service



Refurbishing your equipment can cost about 40% less than purchasing new and typically can be back in service in less than a week.

Spindle Services Include:

- No cost evaluation and estimate
- Replacement of worn components
- Failure Analysis
- Assembly, Test, and Quality Assurance documentation
- Emergency 24-hour evaluation
- 6-month warranty from installation
- Spindle housing & resort service
- Spindle pick-up & installation service

**20+ Years Experience of Excellent Spindle Repair
Trust Quality. Trust Gilman Precision.**

Since 1952, Gilman Precision has been dedicated to the advancement of high precision solutions that improve efficiency and achieve longevity. Gilman develops customized slides and spindles for value-minded engineers with exacting needs and standards, and provides expert service for virtually any manufacturer's equipment. Only the highest level of quality can be expected when you put Gilman Precision experience and expertise to work for you.

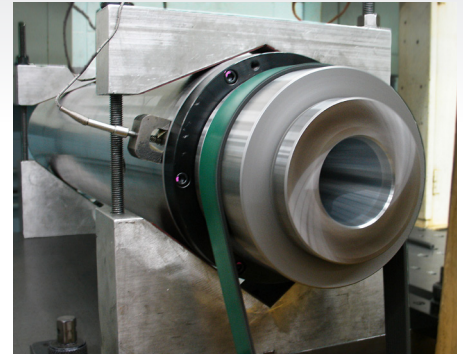
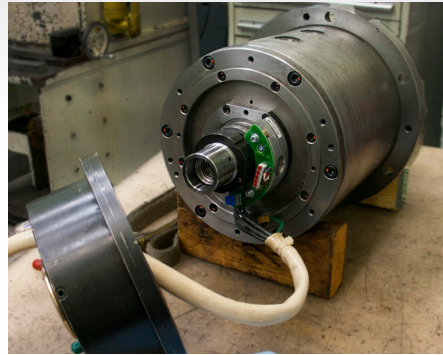
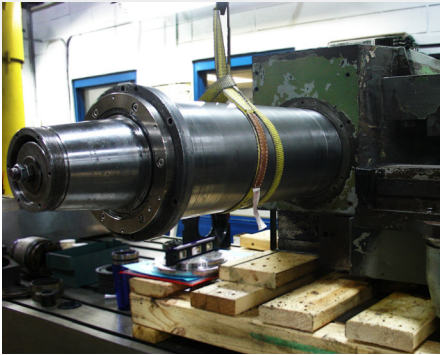
Gilmans' installation and de-installation partner in Wisconsin and Illinois is Busch Precision Inc. Busch provides machining and maintenance services including contract manufacturing, machine repair, machine tool repair, maintenance assistance, component repair/replacement, CNC retrofitting, and complete machinery rebuilding. Busch solves their customers' toughest production challenges through expert service delivered with integrity.



800-445-6267 | www.gilmanprecision.com

Spindle Repair Service

If your spindle fails tomorrow,
Gilman's repair service is your backup plan.



1 EVALUATE & ESTIMATE

In-House Capabilities

Our in-house engineering, machining, and testing capabilities allows for quick turnaround time, total quality control, and solutions for tough engineered challenges.

Emergency Evaluation

Get your damaged spindle evaluated within 24 hours at no extra cost with Gilman's emergency evaluation service.

2 REBUILD, REPAIR & REFURBISH

Spindle Repair

Gilman Precision provides rebuild, repair & refurbish services on virtually any brand, model and type of belt driven and integrally motorized spindles.

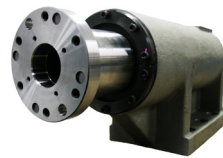
Quality Control

Our class 10000-level clean-room and state-of-the-art production equipment provides quality repairs with double the long-life capabilities compared to a traditional plant.

3 QA TESTING

Quality Assurance Assessment and Documentation Includes:

- Vibration analysis
- Temperature run in curve
- All run-outs of the spindle



4 GILMAN BENEFITS

Pick Up & Installation

Gilman Precision and Busch Precision partnered to provide spindle removal, transportation, and expert installation services in the WI/IL area.

Spindle Housing & Resort

In order to maintain customer warranties, Gilman will securely store repaired spindles, and re-evaluate the spindle before shipping. The warranty then begins upon installation.

“ Our initial problem was excessive vibration and noise from the spindle. We sent it in to Gilman and had them analyze it to correctly assess the problem. They gave us a quote, we offered them to opportunity to continue and repair it, which they did in a timely manner, and returned it to us promptly. We were very happy with the service. ”

Randy Pattison, Binsfeld Engineering

Customized Rotary Motion Solutions... Since 1952.

Gilman prides itself on ingenuity and the ability of finding an answer for your engineering challenge. No matter how simple or complex, Gilman can design a slide or spindle to meet your exact need. Call us today to discuss your challenge.

The contents of this publication are the copyright of the publisher and may not be reproduced (even extracts) unless prior written permission is granted. Every care has been taken to ensure the accuracy of the information contained in this publication but no liability can be accepted for any loss or damage whether direct, indirect or consequential arising out of use of the information contained herein.



Busch Precision Inc
8200 N. Faulkner Road
Milwaukee, WI 53224
Telephone: 414-362-7300
Fax: 414-362-7319
email: info@BuschPrecision.com

Gilman Precision
1230 Cheyenne Avenue
P.O. Box 5
Grafton, WI 53024
Telephone: 262-377-2434
Fax: 262-377-9438
email: sales@GilmanPrecision.com